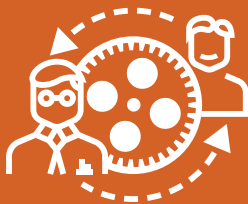


GETTING STARTED WITH iLEAD ONLINE

1) MEET WITH YOUR COUNSELOR/GUIDE

Decide what class or classes you need to take with iLEAD Online this semester.



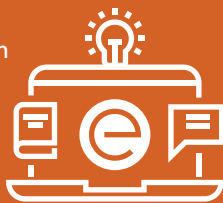
2) REGISTER USING iLEADONLINE.ORG

Make sure to fill in all fields; accurate information is important here.

3) CHECK YOUR EMAIL

You will receive confirmation of registration and log-in instructions via the email you provided during registration. If you don't receive a message within 24-hours, check your spam box. Still nothing?

Email to online.classes@ileadschools.org



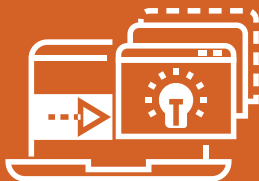
Log in to: ileadonline.learning.powerschool.com



4) LOG IN TO POWERSCHOOL ileadonline.learning.powerschool.com

5) START YOUR CLASS

Your classes are in PowerSchool. For help, reach out to your instructor, or use the Live Tutor course to get real-time help.



FOR MORE INFORMATION, VISIT:
iLEADonline.org

3 HANDY TIPS FOR SKILLFULLY NAVIGATING iLEAD ONLINE



FOLLOW THE AGENDAS EACH WEEK

Weekly agendas are in the left-hand navigation menu; they guide you to course completion.



COMPLETE THE WEEKLY DISCUSSIONS

Don't forget the discussion boards. You need to go back and leave comments and respond to comments on your post.



DON'T BE AFRAID TO ASK

Reach out if you are lost, confused, frustrated, or need help. Your facilitator is great at responding, or you can use the Live Tutor course in PowerSchool.

STAY CONNECTED!

Website: ileadonline.org

PowerSchool: ileadonline.learning.powerschool.com

Email For Help: online.classes@ileadschools.org

